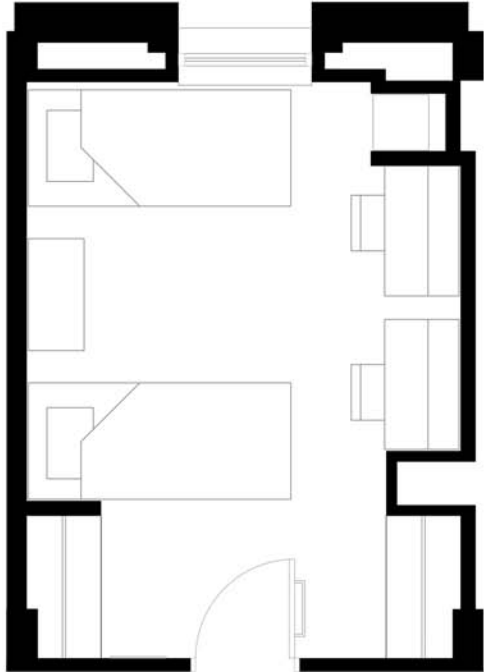


# Schurz



## Typical Double Room

*Approximate Room Dimensions: 11'7" x 15'6"*

*Window Dimensions: 3'7" wide by 4' 11" tall*

*Height of Wall from Floor to Window Sill: 2'6"*

*Heating/cooling unit takes up 2'6" square (enclosed) area in the corner of all rooms*

*Bunkable bed (regular twin sheets will fit our mattresses)*

*Desk with pencil drawer and study carrel (tackboard and light attached)*

*Small mobile pedestal with 2 drawers*

*4 drawer chest*

*Convertible desk chair*

*Full length mirror (attached to wall)*

*Small trashcan*

*2 Wall-mounted bulletin boards*

*Closet shelves*

**Note:** *Room dimensions include closets, which are 2' x 3'10" each. You will need a tension rod that will accommodate the entire 3'10" width of the closet if you plan to hang a covering over the opening.*



*University of Missouri*

*Department of Residential Life*