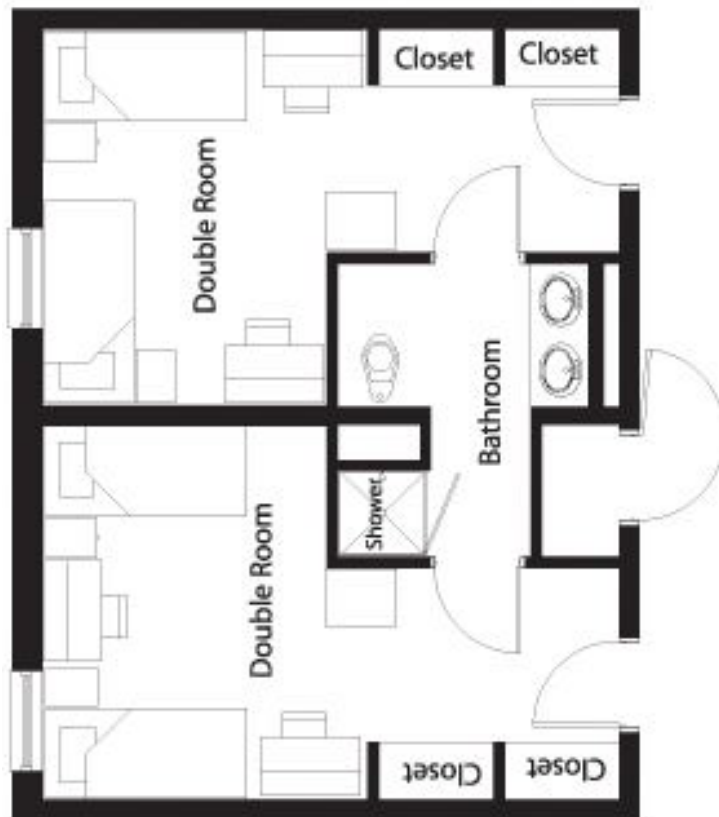


College Avenue Double Semi-Suite



Typical Double Suite

Dimensions

- Approximate Room Dimensions:
L-shaped room 20'd x 5'w, 13'w
- Approximate Window Dimensions:
(1) 3'4" w single
- Approximate Closet Dimensions:
(2) 4'w x 2'd with no doors
 - Floor to top of shelf: 5'
 - Top of shelf to ceiling: 1'6"

Each room has:

- Shared full restroom
- Full-length mirror
- Shared four-drawer dresser
- Trash can
- 2" blinds

- Digital cable TV jack and service
- Ethernet jack and service & wireless service

Each student has:

- Bunkable, height-adjustable bed
 - *bed heights are adjustable, lowest setting is 5" the highest setting is 2'7" between the bottom of the metal bed frame to the floor
- Mattress, mattress pad
- Desk, desk chair
- Study hutch with task light and tackboard
- Two-drawer mobile pedestal
- Wall-mounted 3' x 4' tackboard
- Closet with shelf